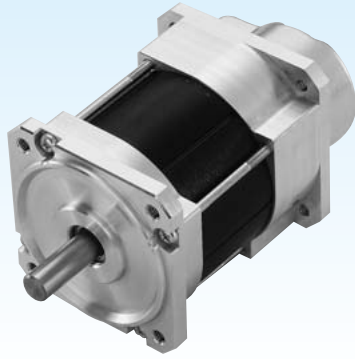


# DCブラシレスモータ

## DC Brushless Motor

### インナーロータタイプ Inner Rotor Motor

#### LA SERIES



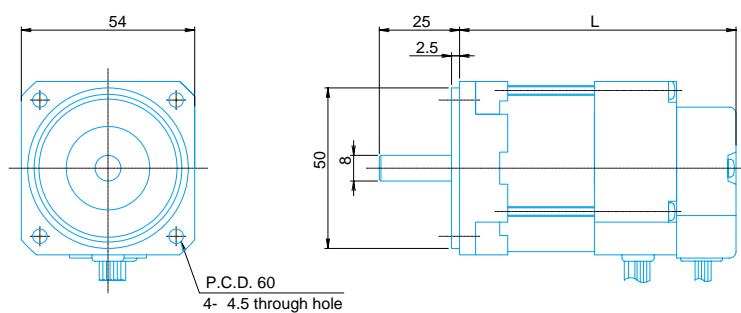
## SPECIFICATIONS

MODEL	RATED POWER		RATED SPEED r/min	RATED TORQUE		RATED CURRENT A	TORQUE CONSTANT N-m/A	BACK EMF CONSTANT V-s/rad	PHASE RESISTANCE Ω	PHASE INDUCTANCE mH	INSTANTANEOUS PEAK TORQUE N-m	MAX. SPEED r/min	ROTOR INERTIA g-cm <sup>2</sup>	POWER RATE kW/s	MECHANICAL TIME CONSTANT ms	ELECTRICAL TIME CONSTANT ms	MASS kg
	W	V-DC		N-m	A												
LA052-040E	40	24	3000	0.127	2.5	2.5	0.05	$5.0 \times 10^{-2}$	1.18	4.4	0.382	5000	110	1.48	5.2	3.7	0.6
		75		0.127	0.9												
LA052-080E	80	24	3000	0.255	4.6	4.6	0.059	$5.9 \times 10^{-2}$	0.60	1.4	0.765	5000	117	5.56	2.0	2.3	0.6
		75		0.255	1.8												
LA052-110E	110	75	3000	0.353	2.1	2.1	0.196	$19.6 \times 10^{-2}$	3.71	9.1	1.059	5000	185	6.74	1.8	2.5	0.6

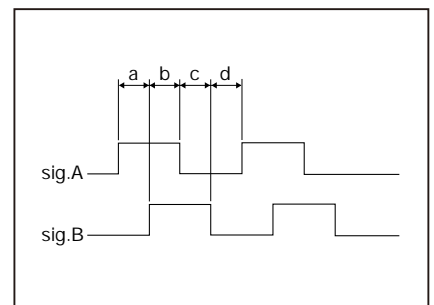
TYPE	OUTPUT CIRCUIT	RESOLUTION	NUMBER OF CHANNELS	POWER SUPPLY	CONSUMPTION CURRENT	OUTPUT VOLTAGE	PHASE OFFSET	FREQUENCY RESPONSE	OPERATING TEMP. RANGE
		P/R		V-DC	mA	V-DC		kHz	
HALL SENSOR	OPEN COLLECTOR	-	C1,C2,C3	5±5%	40 max.	14.4min. (I sink=15mA max.)	-	-	0°C~60°C
ENCODER	TTL COMPATIBLE	200,400	A,B	5±10%	50 max.	VOH=2.4 min. VOL=0.4 max. (I sink=3.2A)	a,b,c,d=90°±45°	20 min.	(TEMPERATURE INSIDE OF ENCODER)

上記表は、アルミ板に取り付けた時の値です。  
The values above are measured with aluminum mounting plate of 200 × 200 × 6mm

## DIMENSIONS (Example)



MOTOR TYPE	L
LA052-040E	86.1
LA052-080E	86.1
LA052-110E	106.1



## TIMING DIAGRAM

