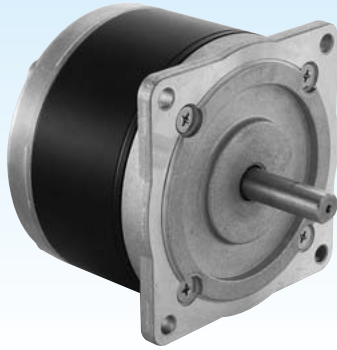


SST83D SERIES**83mm (NEMA 34)****ハイブリッドステップモータ(2相)**
2 Phase Hybrid Step Motor標準タイプ **Standard Model**

1.8°

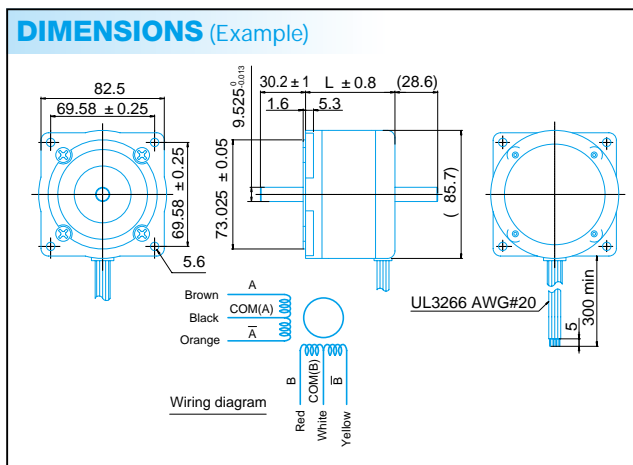
RoHS

Unipolar

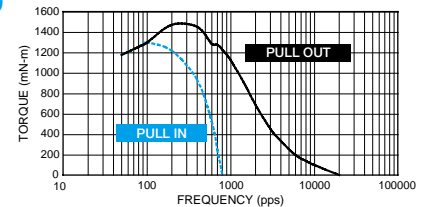
SPECIFICATIONS

MODEL	STEP ANGLE	VOLTAGE	CURRENT	RESISTANCE	INDUCTANCE	HOLDING TORQUE	ROTOR INERTIA	NUMBER OF LEADS	MASS	LENGTH
	deg	V	A/	/	mH/	mN·m	g·cm ²	LEAD	kg	mm
SST83D1C01X	1.8	1.8	4.5	0.4	0.96	1569	570	6	1.4	62.0
SST83D1C02X	1.8	2.8	2.8	1.0	2.60	1569	570	6	1.4	62.0
SST83D1C03X	1.8	5.5	1.3	4.4	15.00	1667	570	6	1.4	62.0
SST83D2C01X	1.8	3.0	4.0	0.8	2.40	2842	1100	6	2.5	93.5
SST83D2C02X	1.8	6.0	2.0	3.0	13.00	3530	1100	6	2.5	93.5
SST83D3C01X	1.8	4.2	3.5	1.2	4.70	4118	1800	6	3.5	128.5

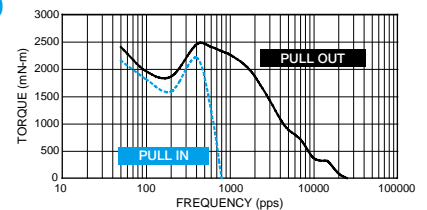
└─末尾 (Final Number) 0 : 片軸 (Single Shaft) 1 : 両軸 (Double Shaft)

DIMENSIONS (Example)**SST83D1C030**

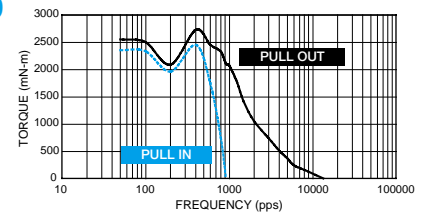
DRIVER : SDU2401
CURRENT = 1.25 A/Phase
EXCITING MODE = 2 Phase
INERTIA LOAD : 680g·cm²

**SST83D2C010**

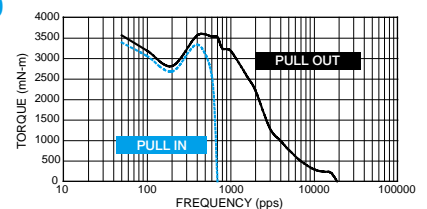
DRIVER : SDU2401
CURRENT = 4.0 A/Phase
EXCITING MODE = 2 Phase
INERTIA LOAD : 680g·cm²

**SST83D2C020**

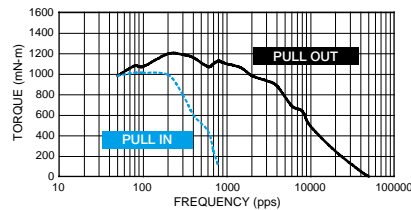
DRIVER : SDU2401
CURRENT = 2.0 A/Phase
EXCITING MODE = 2 Phase
INERTIA LOAD : 680g·cm²

**SST83D3C010**

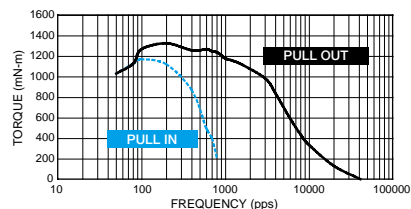
DRIVER : SDU2201
CURRENT = 3.5 A/Phase
EXCITING MODE = 2 Phase
INERTIA LOAD : 680g·cm²

**SST83D1C010**

DRIVER : SDU2401
CURRENT = 4.0 A/Phase
EXCITING MODE = 2 Phase
INERTIA LOAD : 680g·cm²

**SST83D1C020**

DRIVER : SDU2401
CURRENT = 2.8 A/Phase
EXCITING MODE = 2 Phase
INERTIA LOAD : 680g·cm²

**INFORMATION**

ご要求に応じて、巻線を最適にデザインいたします。
We can optimize motor winding based on customer requests.

ご要求に応じて、バイポーラ駆動仕様への変更も対応が可能です。
Bipolar motor design is also available.

ご注意：使用ドライバ、駆動条件によっては、モータがかなり発熱することがあります。モータの外被温度は100℃以下でお使いください。
Note : Depending on driver and driving condition, motor may generate excessive temperature. Recommended temperature on motor surface is 100°C max.