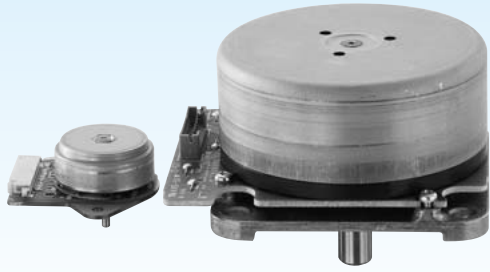


DCブラシレスモータ

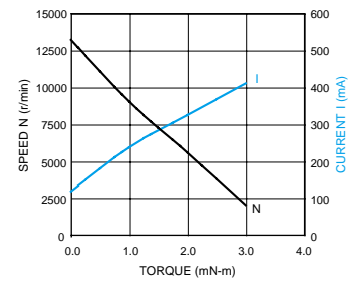
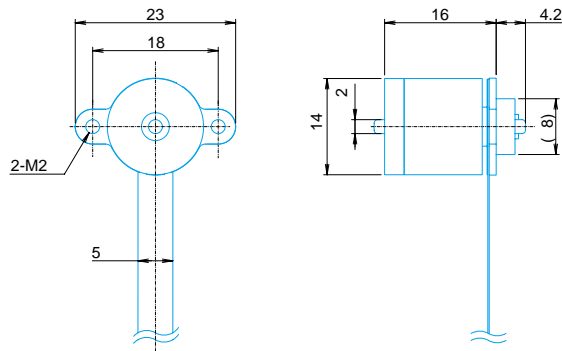
DC Brushless Motor

アウトロータタイプ Outer Rotor Motor



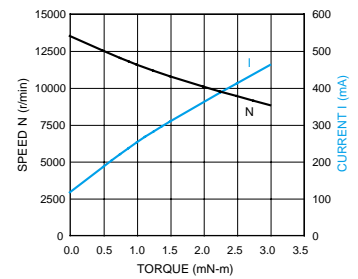
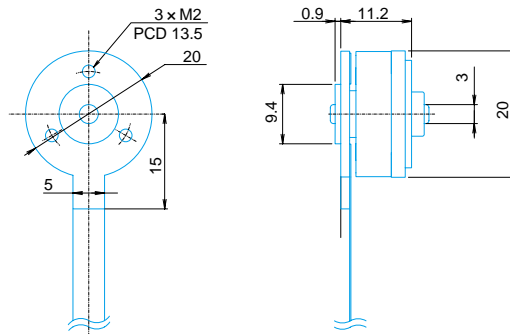
DR-14312

RATED VOLTAGE : 12 V
RATED TORQUE : 0.5 mNm
RATED SPEED : 11000 r/min
RATED CURRENT : 180 mA



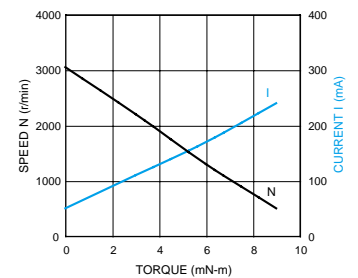
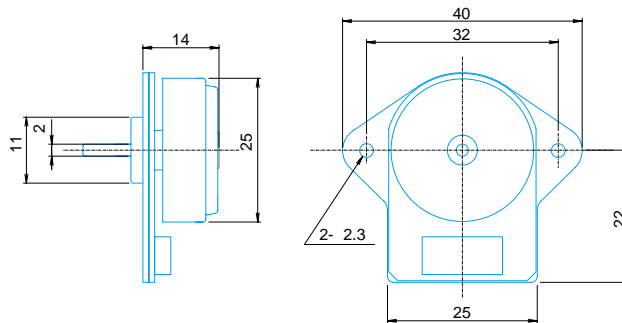
DR-20312

RATED VOLTAGE : 12 V
RATED TORQUE : 1 mNm
RATED SPEED : 12000 r/min
RATED CURRENT : 250 mA



DR-24312

RATED VOLTAGE : 12 V
RATED TORQUE : 3 mNm
RATED SPEED : 2200 r/min
RATED CURRENT : 110 mA

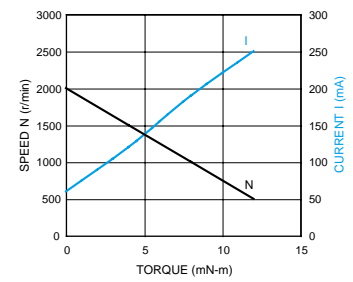
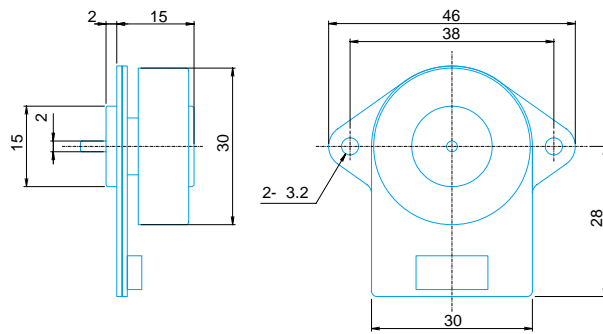


INFORMATION

電源電圧及び出力のご要求に応じて、マグネット、着磁、積層、巻線を最適にデザインいたします。
We optimize motor design with appropriate magnet, magnetization, lamination and winding based on input voltage & output power requirements.

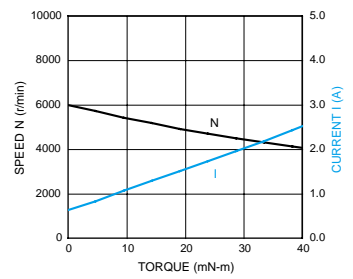
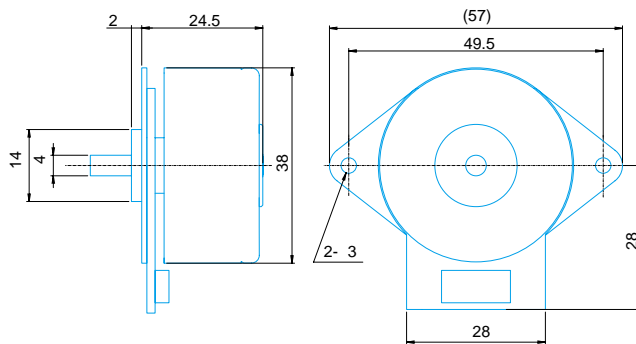
DR-29312

RATED VOLTAGE : 12 V
RATED TORQUE : 6 mNm
RATED SPEED : 1400 r/min
RATED CURRENT : 160 mA



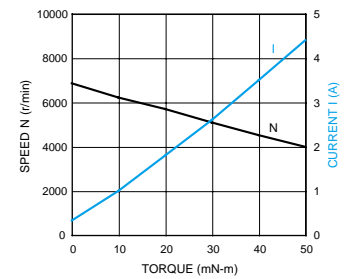
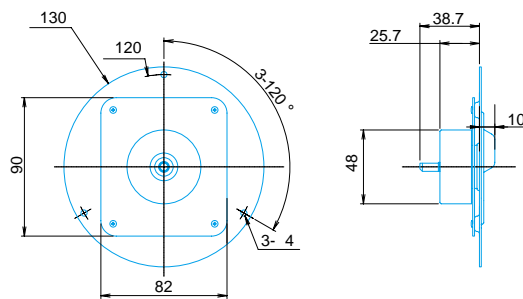
DR-38312

RATED VOLTAGE : 12 V
RATED TORQUE : 15 mNm
RATED SPEED : 900 r/min
RATED CURRENT : 350 mA



DR-4734

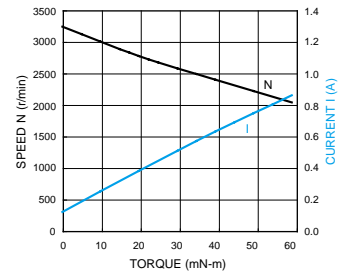
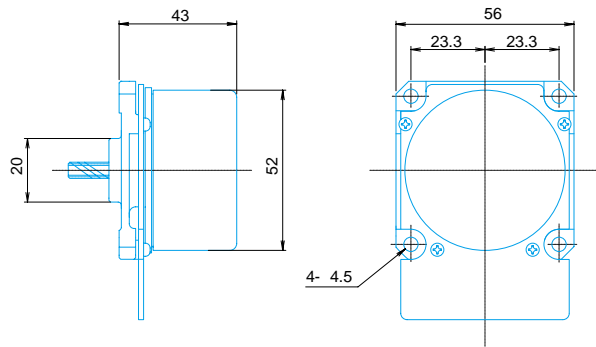
RATED VOLTAGE : 12 V
RATED TORQUE : 23 mNm
RATED SPEED : 5700 r/min
RATED CURRENT : 1.8 A



この製品の取付図は代表例であり、別途専用金型が必要となります。
This outline drawing is for reference purpose only. It require custom tooling for production.

DR-5238

RATED VOLTAGE : 24 V
RATED TORQUE : 50 mNm
RATED SPEED : 2250 r/min
RATED CURRENT : 0.75 A



DR-6236

RATED VOLTAGE : 24 V
RATED TORQUE : 120 mNm
RATED SPEED : 2200 r/min
RATED CURRENT : 1.6 A

